

Trauma Stewardship

by Laura van Dernoot Lipsky

- » Please read pages 19-38: The Three Levels of Trauma Stewardship. Pages 33-38 focus on a profile about Cindy Parry. Read this profile and reflect on the following questions.
 1. While this story relates specifically to medicine, it is not hard to see the parallel in education. How can you relate to Cindy's experiences in regards to your role as a School Leader?
 2. Do you experience burn out, frustration or callousness?
 3. What are your strategies to help you combat these three things?
 4. How can you support your staff to help them combat these three things?

Leverage Leadership 2.0

by Paul Bambrick Santoyo

- » Please read pages 315-330: "Chapter 8 - Finding the Time". Use the template on Page 319 or the Excel spreadsheet on the DVD to create a schedule addressing Steps 1-7.

Get Better Faster

by Paul Bambrick Santoyo

- » Please read pages 25-45: "Principles of Coaching" - Principle #1: Go Granular.
Answer the reflections questions:
 1. What are your biggest take-aways for identifying the right action step for a teacher?
 2. What action steps from the Scope and Sequence would most enhance your repertoire and make you better at giving feedback?
 3. Think of a new teacher you've worked with recently and an area in which that teacher struggled. What would be an effective series of action steps for that teacher?

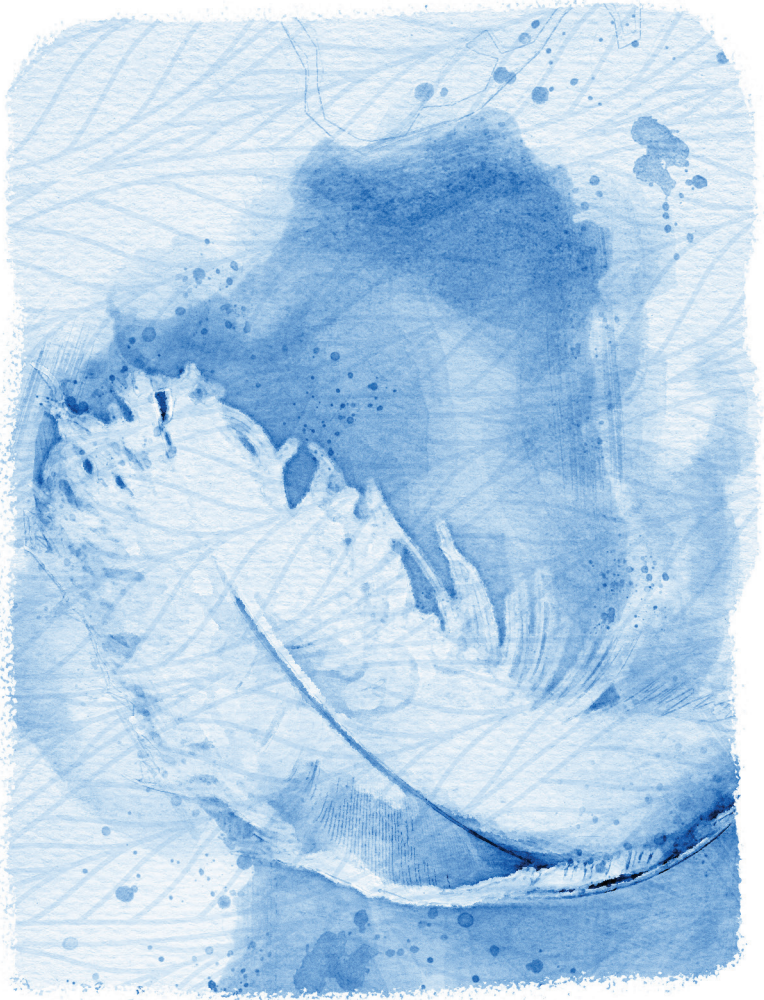
Introduction to Google Classroom

by Annie Brock

- » Please read pages 44-50: "Practical Application of Google Classrooms". Choose of the applications for maximizing benefits of Google classrooms and share with teachers for implementation.

Resources

- » Our first Community of Practice will focus on Social Learning. We will use the resources from "The Center to Improve Social Emotional Learning and School Safety" at <https://selcenter.wested.org/>.
- » Go the SEL website and explore.
- » Click on State Profiles and compare New Mexico's data to our neighboring states and write a brief reflection.
- » Pre-work will be forthcoming to prepare you for our Community of Practice scheduled at the end of October.



LAUNCH»

Leadership Accountability Unity Navigating Change High Expectations

TASK CARD | OCTOBER 2020

DISTRICT SUPPORT PARTNERS, PERFORMANCE COACHES,
SCHOOL LEADERS, INSTRUCTIONAL COACHES & TOSAS

