

Hello ... it is SOOOOOO good to see your faces! While we wait for others to join, answer this question in the chat box :

You have to sing at karaoke, what song do you pick?

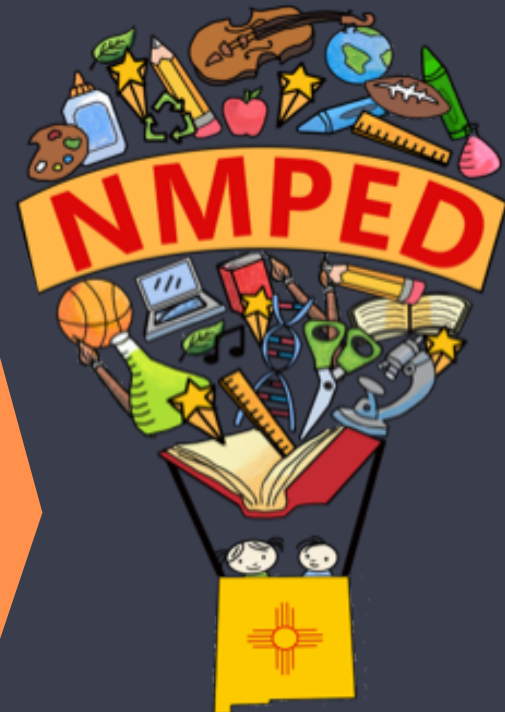
Reset, Reignite, and Reimagine Our Foundations

LAUNCH»

Leadership Accountability Unity Navigating Change High Expectations



Resilience, Instruction, Support, and Excellence



Investing for tomorrow, delivering today.

Re-Setting our Expectation in the New Reality

- Across the country educators have been scrambling to move teaching and learning online in light of the impact of the coronavirus pandemic on public schools.
- This year, so many things are going to be different, and it is important to us that we continue to be a partner who is value-added; one who is intentional in planning, supports and expectations of this new reality.
- We have identified what is possible, reasonable and powerful; and, we determined what would provide the most support to our, already fatigued, teachers and leaders ... We stopped and made some changes.

Re-Setting our Expectation in the New Reality

- Virtual Coaching
 - Check out video on the [PSBNMsupport.com](https://psbnmsupport.com) page for tools and tips!
- Coaching Logs – a new system with our partner REC IX
- Direct Deposit for stipends!!! No more worrying that it got lost in the mail or eaten by the dog
- Lead Coaches for all new Performance Coaches
 - Check out the webinar series on the [PSBNMsupport.com](https://psbnmsupport.com) page for tools and tips!

Re-Igniting the Passion and Power of Learning

Leading-Professional Learning: Building Capacity for Sustained Practice, A Simulation Game for Educators

- Tuesday, October 13 – Wednesday, October 14, 2020: Cohort 7

Group A - 9:00am - 12:00pm

Group B - 1:00pm - 4:00pm

- Thursday, October 15 – Friday, October 16 , 2020: RISE Founders

Group A - 9:00am - 12:00pm

Group B - 1:00pm - 4:00pm

Re-Igniting the Passion and Power of Learning

Performance Coaches and District Support Partners

- Monday, October 19, 2020 and Tuesday, October 20, 2020

Groups 1-5 9:00am - 12:00pm

Groups 6-10 1:00pm - 4:00pm

- Tuesday, October 26, 2020 and Wednesday, October 27, 2020

Groups 11-14 9:00am – 12:00pm

Groups 15-18 1:00pm – 4:00pm

Re-Igniting the Passion and Power of Learning

Forecasting the Rest of the School Year

- We are currently in conversation to provide support to leaders in an e-learning sessions for principals that allows for video analysis to support Observation and Feedback that stretch leaders into deeper and more meaningful conversations.
 - Our commitment to 90-minute focused chunks of learning with direct application to roles ... may shift our key dates

Re-Igniting the Passion and Power of Learning

Read, Think and Act Special Delivery!

- Personalized and intentional resources demonstrating our commitment to continued learning – **Your role, chat it up!**
- PSB has been built and thrives on relationships. We value these relationships and are determined to stay connected.
- If you are supporting multiple PSB programs, you will get multiple goodie boxes.

Re-Imagining Performance Coaching

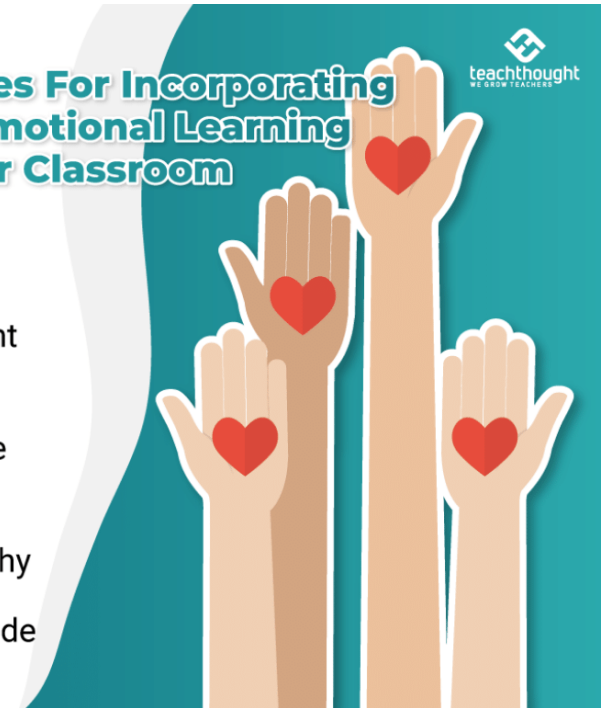
- Performance coaching is a professional learning relationship grounded in a partnership between performance coaches and school leaders.
- It provides school leaders with individualized coaching designed to help them reach their full leadership potential, as evidenced by dramatic, sustainable increases in student and teacher success within a healthy culture.

5

Strategies For Incorporating Social Emotional Learning Into Your Classroom



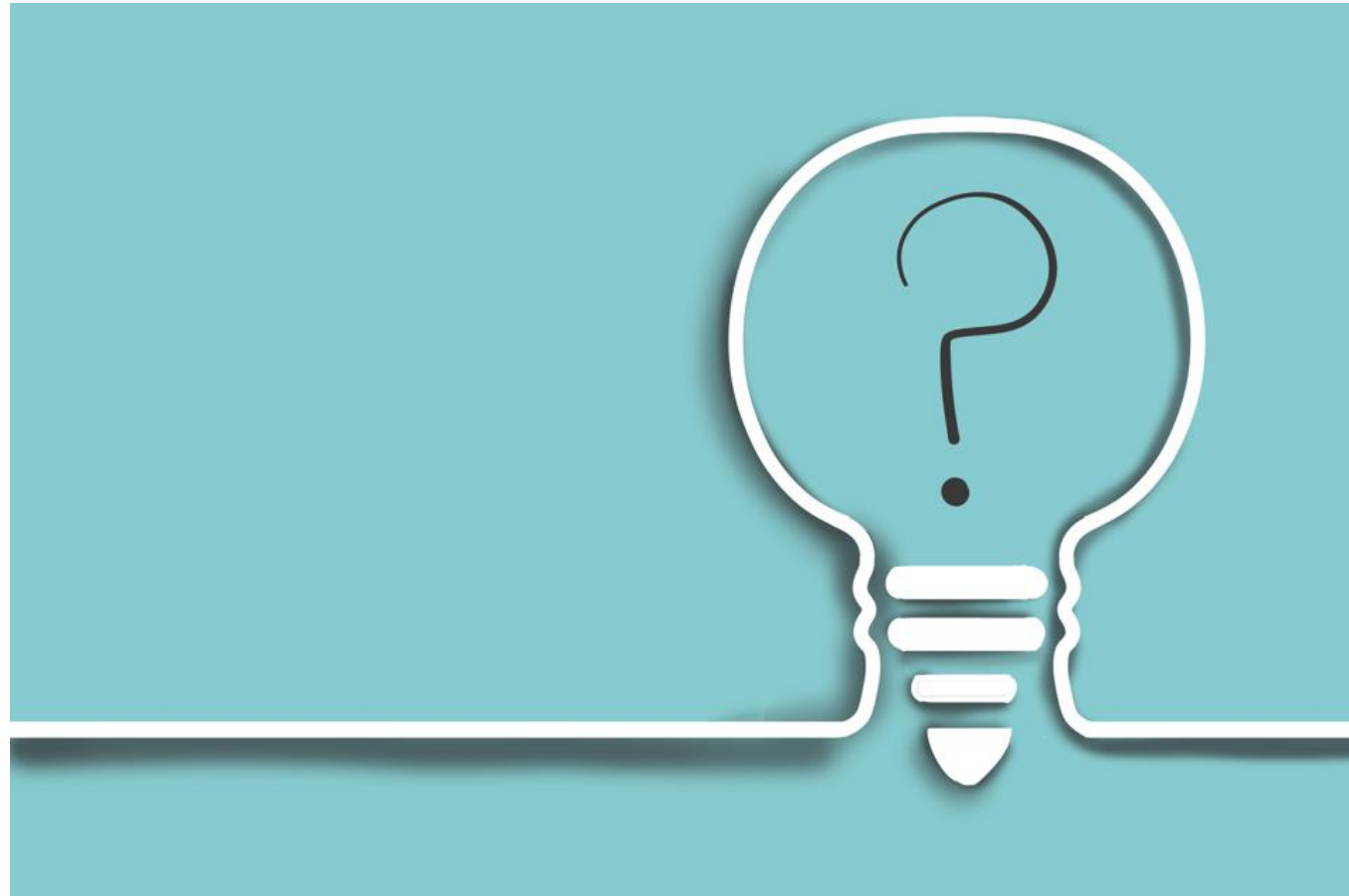
1. Mindfulness
2. Clarify that thought leads to feelings
3. Model persistence and determination
4. Listen with empathy
5. Emphasize gratitude



Better Together

LAUNCH»
Leadership Accountability Unity Navigating Change High Expectations

RISE
Resilience, Instruction, Support, and Excellence



Investing for tomorrow, delivering today

www.psbnm-support.com

LAUNCH

Leadership Accountability Unity Navigating Change High Expectations



Resilience, Instruction, Support, and Excellence

COVID-19 Information - Continuous Learning Plan Support Resources



RISE LAUNCH ACHIEVE EXCELLENCE RISING
HIGH SCHOOL REDESIGN NETWORK RISING



Working to support New
Mexico's most precious
constituents

NM DASH Supplemental Guidance Fall 2020

In Closing ...

LAUNCH»
Leadership Accountability Unity Navigating Change High Expectations

RISE
Resilience, Instruction, Support, and Excellence

"Fight for the things that you care about but do it in a way that will lead others to join you."

- Supreme Court Justice Ruth Bader Ginsburg